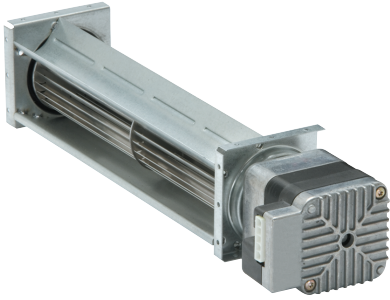


QL4/2000-2212

EC tangential blower

forward-curved



Nominal data

Type	QL4/2000-2212	
Nominal voltage	VDC	24
Speed (rpm)	min ⁻¹	2000
Power consumption	W	6
Min. ambient temperature	°C	0
Max. ambient temperature	°C	60
Air flow	m ³ /h	75
Pressure increase	Pa	12

ml = Max. load · me = Max. efficiency · fa = Free air · cs = Customer specification · ce = Customer equipment
Subject to change

QL4/2000-2212

EC tangential blower

forward-curved

Technical description

Weight	0.65 kg
Dimensions	40 mm
Degree of protection	IP20
Insulation class	"F"
Installation position	Horizontal or vertical with motor on bottom

QL4/2000-2212

EC tangential blower

forward-curved

Product drawing

