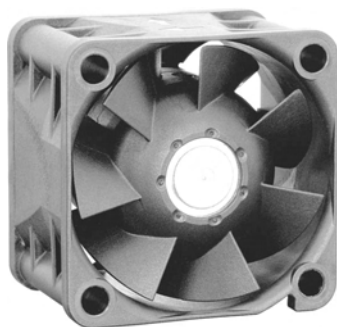


424 JN

DC axial fan



Nominal data

Type	424 JN	
Nominal voltage	VDC	24
Nominal voltage range	VDC	16 .. 28
Speed	min ⁻¹	14250
Power input	W	4.3
Min. ambient temperature	°C	-20
Max. ambient temperature	°C	70
Air flow	m ³ /h	31
Sound power level	B	6.0
Sound pressure level	dB(A)	48

ml = Max. load · me = Max. efficiency · fa = Running at free air · cs = Customer specs · cu = Customer unit
Subject to alterations

Technical features

Mass	0.045 kg
Dimensions	40 x 40 x 28 mm
Material of impeller	Fibreglass-reinforced plastic (PA)
Housing material	Fibreglass-reinforced plastic (PBT)
Direction of air flow	Air exhaust over bars
Direction of rotation	Counter-clockwise, looking at rotor
Bearing	Ball bearing
Lifetime L10 at 20 °C	67.500 h
Lifetime L10 at 60 °C	35.000 h
Connection line	With single strands AWG 28, UL 1061
Approval	VDE, CSA, UL
Option	Special options: Speed signal Go / No-go alarm External temperature sensor PWM control input Moisture protection Protection against salt spray fog

Charts

